



ANI Portal

Visualized Application and Network Intelligence

Network operators are faced with a variety of challenges, from technology turns (e.g., cloud and 5G) to increasing application complexity, and consumers who demand more and more from the network. To manage these concurrent challenges, operators need access to relevant and actionable data to drive their business investment and inline network decisions.

Sandvine offers best-in-class network and application data, which prioritizes quality experience, and highly precise inline actions.

With this foundation, Sandvine's Application and Network Intelligence is powering the next wave of network transformation, enabling operators to improve QoE for consumers with closed-loop actions and machine learning-based intelligence. Application and Network Intelligence is the underpinning technology across all of Sandvine's solutions and use cases, which are agnostic to network vendors, network architecture, or IT architecture.

KEY BENEFITS

- Contextual visualization of Sandvine's unique network, subscriber, and QoE network intelligence
- Results-based intelligence and visualization for inline use cases in Network Optimization, Closed-Loop Automation, Revenue Generation and Assurance
- Single source of truth for all network access types
- Designed to integrate into existing workflows for network operators
- End-to-end visibility allows a holistic approach to solve outcome-based problems

SANDVINE'S ANI PORTAL: VISUALIZED VALUE FROM A SINGLE PANE OF GLASS

The ANI Portal unlocks the ROI of Sandvine's solutions with a holistic network-wide view, including the impact to QoE performance, plan adoption, and fraud levels. With the ANI Portal, operators have access to contextual use case information by user, device, service, technology, and network access type, aligned with the standard, operator-defined workflow.

Sandvine's solutions, use cases, and the extracted network intelligence drives the ANI Portal, enabling operators to focus on transforming their networks to handle factors such as encryption, cloud, and increasing application complexity. Application and Network Intelligence is Sandvine's strategy to enable network operators to leverage automated, closed-loop use cases to meet the always increasing quality expectations of users while maintaining business profitability.

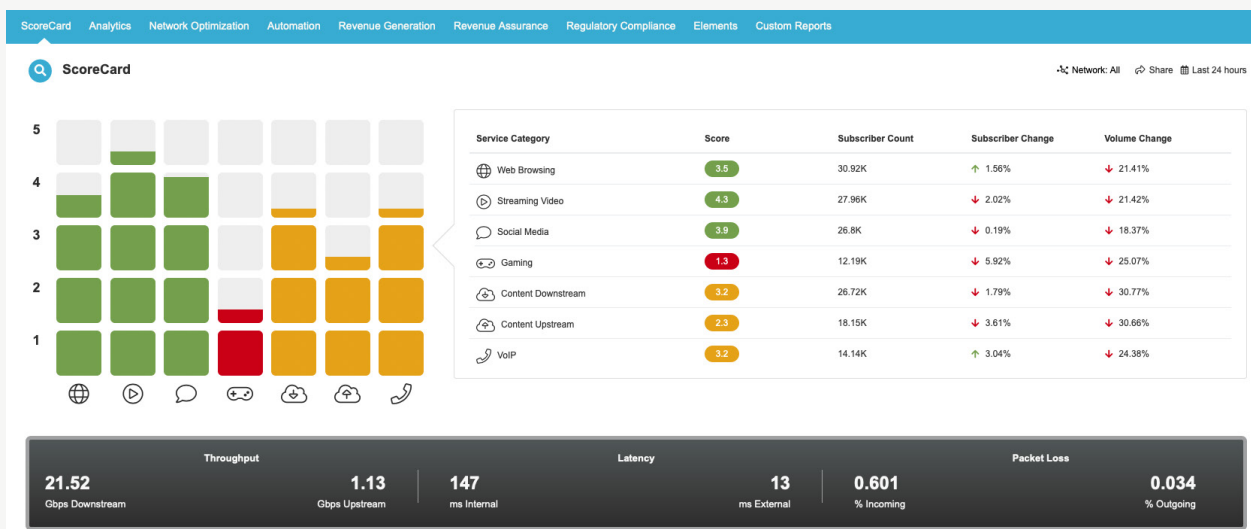
ANI PORTAL OVERVIEW

The ANI Portal provides operators with real-time visibility into network conditions so that they can analyze and rapidly react to these challenges through automated, closed-loop, and QoE-based use cases.

The ANI Portal delivers clear, macro-level network insights, including QoE metrics for services delivered to enterprise and consumers (**Figure 1**). Further empowering operators, the ANI Portal visualizes Sandvine's Analytics, Network Optimization, Closed-Loop Automation, Revenue Generation and Assurance solutions and underlying use cases.

Figure 1

Various teams within an operator benefit from a clear, end-to-end view on how the network is delivering applications and therefore the quality experienced by users



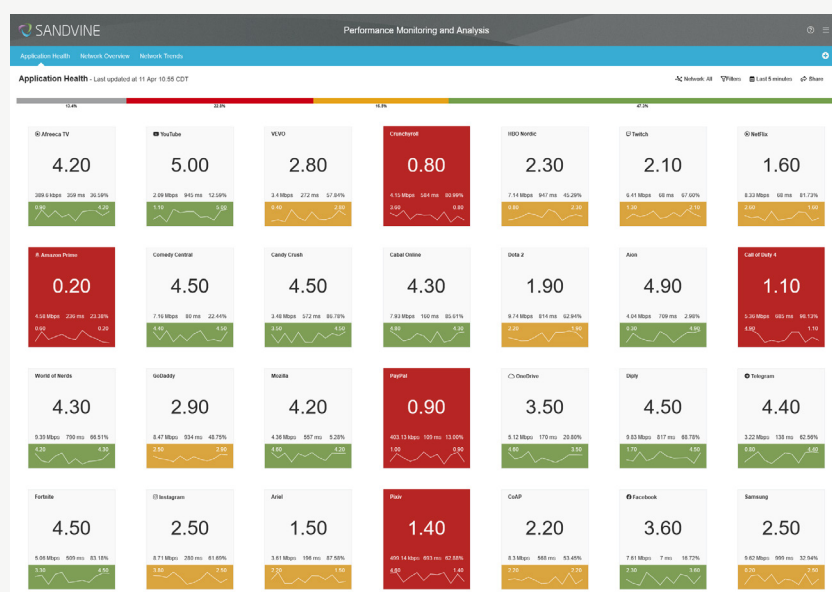
The ANI Portal empowers operators in their digital transformation and provides an end-to-end view of Sandvine's application QoE intelligence

ANI Portal Highlights

- Use case-based visualization and data exploration of Sandvine's network intelligence
- Unparalleled analysis of key performance datasets with out-of-the-box use case dashboards
- Real-time and historical views of Sandvine's Analytics, Network Optimization, Closed-Loop Automation, and Revenue Generation and Assurance
- Support for both pre-configured analytics dashboards as well as dynamic report creation leveraging the network intelligence contained in Sandvine's Insights Data Storage
- Single-pane view for scalable, carrier-class architecture provides for supporting large scale, geographically distributed deployments in physical, virtual, hybrid, or cloud-based environments (see [Elements Datasheet](#) for more information)

Figure 2

Sandvine's ANI Portal takes an application QoE-focused approach to network monitoring and management



All operators can benefit from the ANI Portal, and take that critical step towards establishing an agile, automated, phenomena-centric environment. With these insights, the ANI Portal provides out-of-the-box use case dashboards for exploring the intelligence collected, enabling rapid resolution of critical problems and the ability to spot opportunities to generate revenue, improve QoE, reduce cost, and implement surgical actions that will have immediate business impact.

ABOUT SANDVINE

Sandvine's cloud-based Application and Network Intelligence portfolio helps customers deliver high quality, optimized experiences to consumers and enterprises. Customers use our solutions to analyze, optimize, and monetize application experiences using contextual machine learning-based insights and real-time actions. Market-leading classification of more than 95% of traffic across mobile and fixed networks by user, application, device, and location creates uniquely rich, real-time data that significantly enhances interactions between users and applications and drives revenues. For more information visit <http://www.sandvine.com> or follow Sandvine on Twitter @Sandvine.



USA
5800 Granite Parkway
Suite 170
Plano, TX 75024
USA

EUROPE
Svärdfiskgatan 4
432 40 Varberg,
Halland
Sweden
T. +46 340.48 38 00

CANADA
410 Albert Street,
Suite 201, Waterloo,
Ontario N2L 3V3,
Canada
T. +1 519.880.2600

ASIA
RMZ Ecoworld,
Building-1, Ground Floor,
East Wing Devarabeesanahalli,
Bellandur, Outer Ring Road,
Bangalore 560103, India
T. +91 80677.43333

Copyright ©2022 Sandvine Corporation. All rights reserved. Any unauthorized reproduction prohibited. All other trademarks are the property of their respective owners.

This documentation, including all documentation incorporated by reference herein such as documentation provided or made available on the Sandvine website, are provided or made accessible "AS IS" and "AS AVAILABLE" and without condition, endorsement, guarantee, representation, or warranty of any kind by Sandvine Corporation and its affiliated companies ("Sandvine"), and Sandvine assumes no responsibility for any typographical, technical, or other inaccuracies, errors, or omissions in this documentation. In order to protect Sandvine proprietary and confidential information and/or trade secrets, this documentation may describe some aspects of Sandvine technology in generalized terms. Sandvine reserves the right to periodically change information that is contained in this documentation; however, Sandvine makes no commitment to provide any such changes, updates, enhancements, or other additions to this documentation to you in a timely manner or at all.